

DIRECTIONS FROM C/O LOCH AND BOWKER STREET, DOUGLAS

1) Travel NORTH on Bowker St toward Roper St (1.1km)



DIRECTIONS FROM C/O LOCH AND BOWKER STREET, DOUGLAS

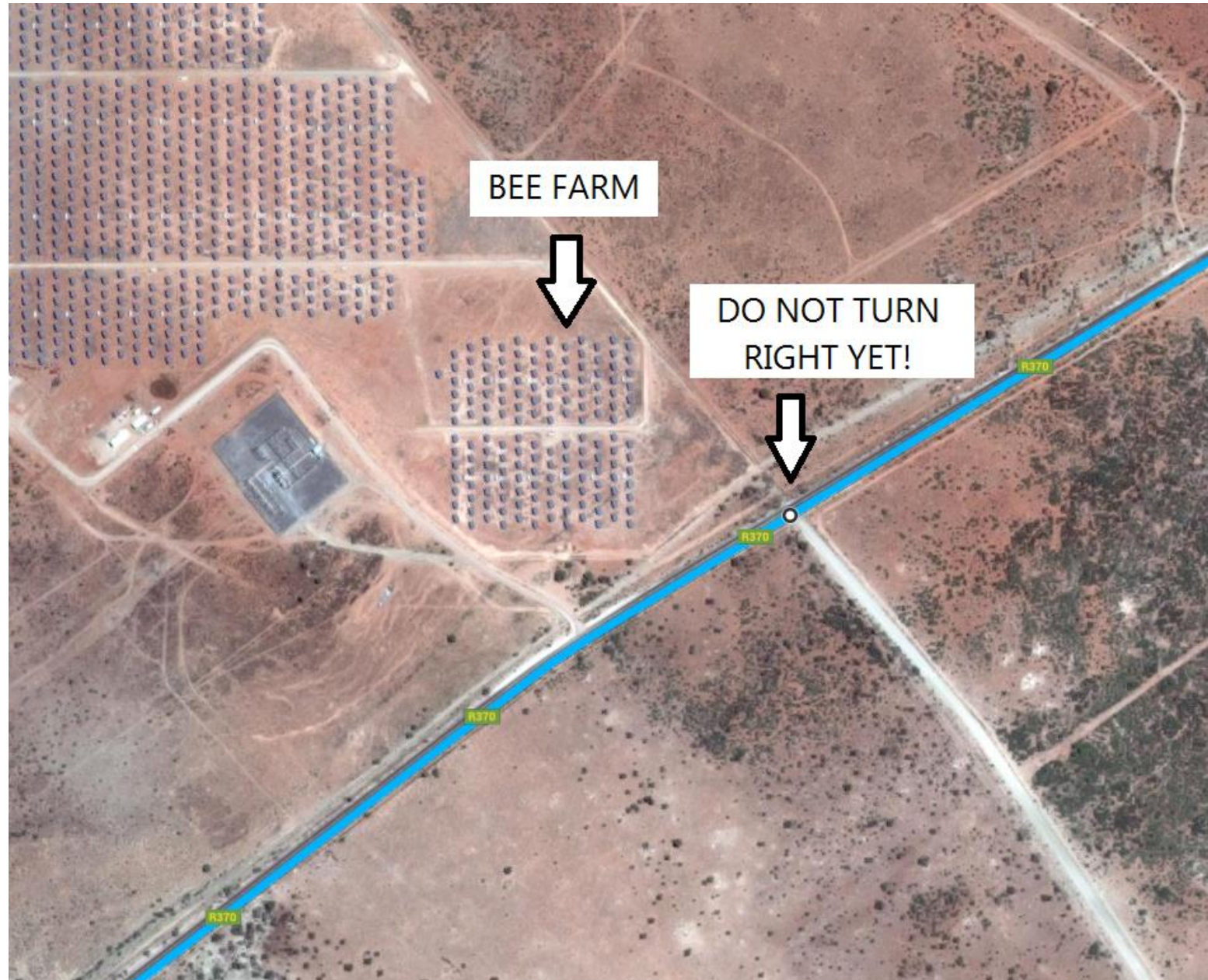
2) Continue onto R370 (11.2km)



DIRECTIONS FROM C/O LOCH AND BOWKER STREET, DOUGLAS

CAUTION:

After continuing NORTH on the R370 for 8km you will pass the Bee Farm, do NOT turn right onto the gravel road here because it looks similar to the turn off that you will need to take 4km onwards! Keep traveling.



DIRECTIONS FROM C/O LOCH AND BOWKER STREET, DOUGLAS

3) Turn RIGHT onto gravel road and follow the red line on the detailed map!

